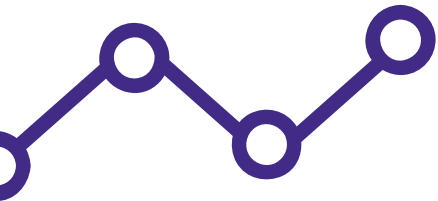
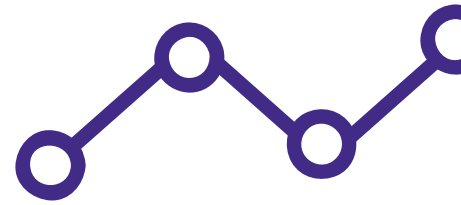


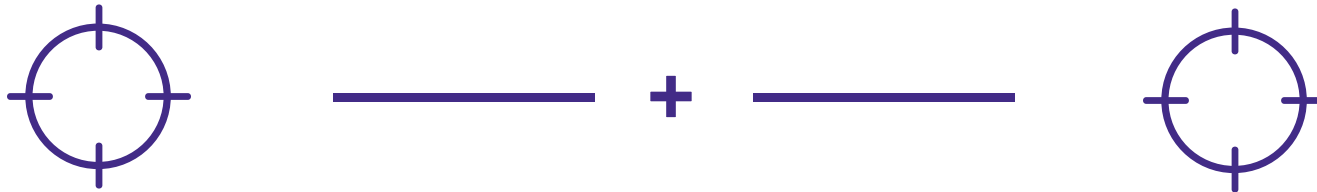
2016

Year in Review

SCANPH



MISSION



SCANPH envisions strong Southern California communities where an affordable home is available to everyone. Our mission is to facilitate affordable housing development across Southern California by advancing effective public policies, sustainable financial resources, strong member organizations, and beneficial partnerships.



SERVING FIVE COUNTIES

The logo for SCANPH, featuring the word "SCANPH" in a bold, blue, sans-serif font, centered within a white rectangular box that is itself set against a grey background.

Executive Director's Note

Dear Supporters:

Together we faced head-on so many issues that concern affordable housing developers and advocates in 2016. I'm proud of the organizational and public policy strides that we made on behalf of SCANPH members and our partners this year. The important victories won at the ballot box this fall were possible because the housing crisis has struck the public consciousness and SCANPH aligned with important partners to wield power in new and effective ways. Fresh off success at the polls, our work is cut out for us in 2017 as we implement newly-born programs and seek to secure still-needed resources for development.

I want to thank the SCANPH staff and board members who worked so hard this year to serve our membership, and, of course, the members who have provided so much support for our efforts. I look forward to our members' continued support as we work to make our industry as impactful as possible. Our goal remains to fight poverty by providing homes that are safe, decent, and affordable. Improving the quality of life for these neighbors depends on our efforts. As we close the books on 2016, SCANPH is optimistic that 2017 will be another successful year.

Best wishes,

Alan Greenlee

MEET THE SCANDPH TEAM



ALAN GREENLEE
Executive Director



LISA PAYNE
Policy Director



JEANNETTE BROWN
Manager of Communications
and Programs



MAIRA SANCHEZ
Policy Coordinator



BLANCA MELCHOR
Event Coordinator

SCANPH COMMITTEES



EXECUTIVE

Staff: Alan Greenlee



POLICY &
ADVOCACY

Staff: Lisa Payne and Maira Sanchez



FINANCE

Staff: Alan Greenlee



COMMUNICATIONS
& MEMBERSHIP

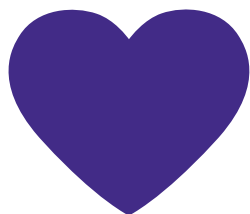
Staff: Jeannette Brown



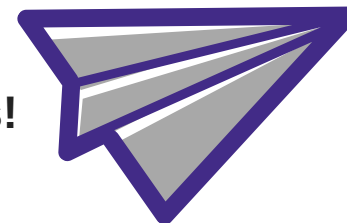
CONFERENCE &
SPONSORSHIPS

Staff: Blanca Melchor and Jeannette Brown

THANK YOU TO OUR MAJOR SUPPORTERS IN 2016

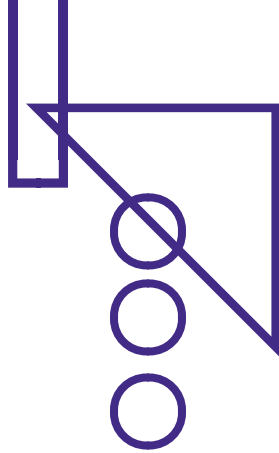


You're the wind beneath our wings!



- CONRAD N. HILTON
FOUNDATION
- WEINGART
FOUNDATION
- CALIFORNIA
COMMUNITY
FOUNDATION
- CAPTIAL ONE
- LA COMMUNITY
DEVELOPMENT
COMMISSION

- UNION BANK
- US BANK
- CHASE
- CITI
- BANK OF AMERICA
- WELLS FARGO
- PACIFIC WESTERN
BANK
- ABODE
COMMUNITIES

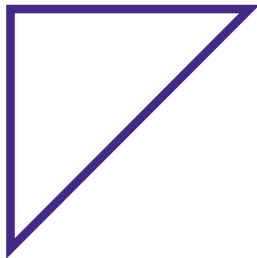


**2016 BOARD OF
DIRECTORS**



**200+ HOURS OF
DONATED TIME**

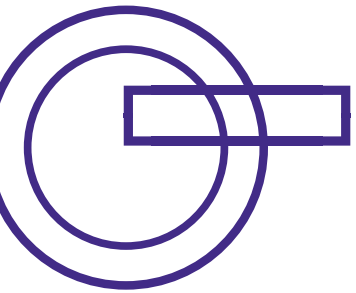
- Strategic Planning
- Policy Input
- Financial Direction
- Staff Support
- Fundraising
- Industry Expertise
- Community Relations



THANK YOU!



**IN 2016 WE FORMED
NEW POLICY
SUBCOMMITTEES**



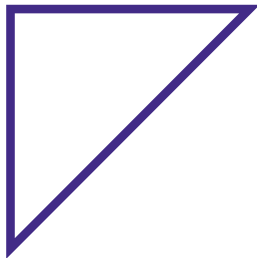
47 MEMBERS!

Los Angeles City and County
Subcommittee: 15 members

Property and Asset Management
Subcommittee: 11 members

California State Housing Program
Subcommittee: 17 members

TCAC/CDLAC Subcommittee: 17
members





New SCANPH Board Members



Welton Smith

Jamboree Housing

Welton Smith is the Senior Vice President of Housing Development at Jamboree Housing. He has direct responsibility for the Business Development, Project Management, and Construction functions of Jamboree and brings with him more than 30 years of private and public sector real estate development experience.



Tara Barauskas

Community Corporation of Santa Monica

Tara Barauskas joined Community Corp. in 2016 as the Executive Director. She is responsible for the overall management of the organization and achieving its strategic goals and vision. She has been working in the affordable housing industry since 1999, in both the for-profit and non-profit sectors.



Anne Friedrich

Menorah Housing

Anne Friedrich has been CEO of Menorah Housing Foundation since January 2001. Under her leadership, the foundation develops, manages, and offers on-site services to extremely low-income residents age 62 years or older in 1,221 apartments throughout Los Angeles County.

Outgoing Leadership



Rochelle Mills

Outgoing Board
President (2010-2016)

Rochelle Mills is responsible for housing development, new project initiatives, and business development at Innovative Housing Opportunities. She brings to IHO more than 20 years of experience in architecture, art, design, construction administration, and community planning.



Channa Grace

Outgoing Board
Member (2010-2016)

Channa Grace is the President and CEO of WORKS, Women Organizing Resources, Knowledge, and Services.

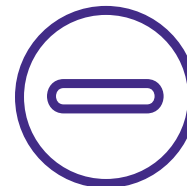
Staff Change



Jeannette Brown

New SCANPH Staff

Jeannette Brown joined SCANPH's staff in August 2016 as the new Manager of Communications & Programs.



ANNUAL

HOUSING

CONFERENCE



CONFERENCE RUNDOWN



700+ ATTENDEES

14 workshops; 2 seminars

*Affordable Housing 101
Seminar--SOLD OUT



Homes within Reach Awards:
17 nominees for outstanding
developments



Conference sponsorships:
Exceeded yearly goal

All Aboard! Affordable Housing
Bus Tour--SOLD OUT





**"Housing is a vaccine.
Housing is a
healthcare
investment."**

**— DR. MEGAN SANDEL
2016 CONFERENCE KEYNOTE SPEAKER**

WORKSHOPS / WEBINARS

10 in
2016

- Utilizing the Ballot for Affordable Housing: Looking Beyond Election 2016
- Making Collaborations Work in Affordable Housing Development
- Why Residents United Network Works
- Risk Management 101 - Common Hazards and Strategies to Avoid Claims
- Cap-and-Trade Dollars + Your Buildings = Savings,
- State & Regional Legislative Round-Up
- Building Strong Foundations Through Interior Design: How To Build A Stronger Community In Your Developments Inside And Out
- Everything You Wanted to Know About Title Insurance but Were Too Afraid to Ask
- May 2016 Workshop: Why does art matter? How can you retain artists in a gentrifying neighborhood?
- Affirmative Marketing of Affordable Units

• **500+ Attendees** •



SCANPH

SCANPH

SCANPH

SCANPH

SCANPH

SCANPH

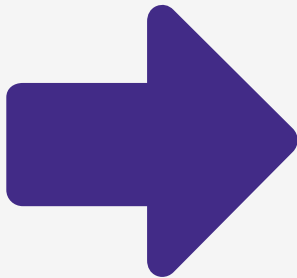


POLICY WINS

SCANPH

SCANPH

SCANPH

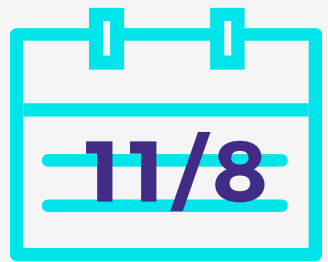


SCANPH



Election 2016

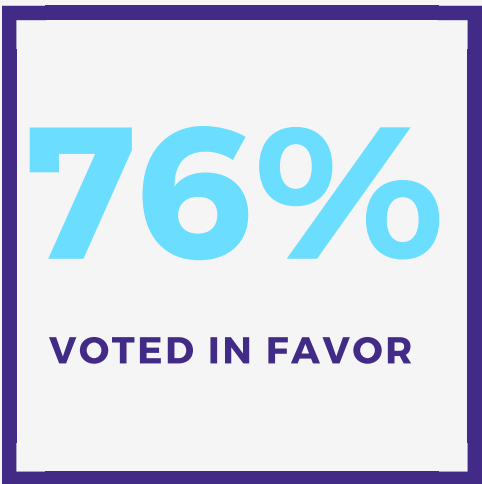
SCANPH Goes to Bat
for 3 Local Measures



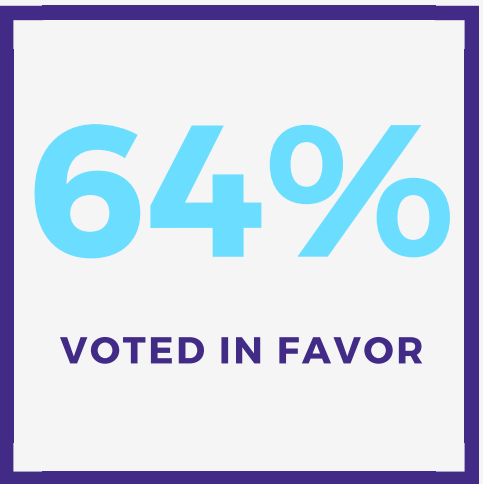
3-for-3!



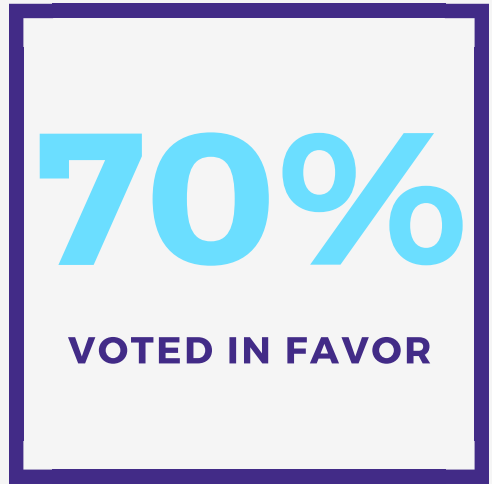
PROPOSITION HHH



PROPOSITION JJJ



MEASURE M



SCANPH'S FIGHT FOR FUNDING

SEPTEMBER 2016

The LA County Board of Supervisors allocated \$20 million for the 2016-17 fiscal year pursuant to the Affordable Housing Programs Motion passed in 2015 as part of the Supplemental Budget. The Affordable Housing Programs Motion requires that the county increase its allocation by \$20 million each year until the County allocates the full \$100 million for affordable housing in 2020-21 and each year thereafter.

Advocacy by SCANPH and LA Voice was instrumental in securing a declaration from the CEO's office that the ongoing funding would be met and that...

75%

of the budget will come from ongoing revenues.





POWER OF THE PEN

8 MAJOR LETTERS OF SUPPORT FOR LEGISLATIVE BILLS

- Assembly budget asks for housing: \$1.3 billion in housing
- AB 2502 (Mullin) Palmer Fix
- AB 2140 Farmworker Housing Assistance Tax Credit Program
- AB 2821 - creates medi-cal housing program to fund rental assistance
- ***No Place Like Home Budget Initiative**
- SR 84 - calling on the Governor to declare a state of emergency for homelessness
- SB 1150 - prohibits mortgage servicer from recording a notice of default after being notified of the death of a borrower
- Support for Resolution T-17515 Pertaining to the California Advanced Services Fund (CASF)

***Bill of Note: The “No Place Like Home” initiative, signed by the governor, is a first-of-its kind proposal that provides \$2 billion for the construction and rehabilitation of permanent supportive housing for homeless individuals with mental illness. SCANPH strongly supported this “housing first” approach.**

OUT-AND-ABOUT: POLICY MEETINGS

FALL

SUMMER

SPRING

Linkage Fee Meetings:

- * Mayor's office
- * LA Planning Department
- * Councilmembers Krekorian, Koretz, Englander, Huizar, as well as Wesson's office.

Supplemental Budget Plan for Affordable Housing Programs Motion

- * Supervisors Solis, Ridley-Thomas, Kuehl, and Knabe

Sales Tax Measure

- * Supervisor Janice Hahn

- * Assemblymember Santiago: District 53
- * Assemblymember Autumn Burke: District 62
- * Senator Holly Mitchell (Sydney Kamlager, Deputy Director): District 30
- * Assemblymember Richard Bloom: District 50
- * Ben Pak, Senator De Leon Deputy staff member: District 24
- * Assembly Member Nazarian: District 46

Linkage Fee:

- * LA City Councilmembers Blumenfield and Martinez
- * Mayor's Office

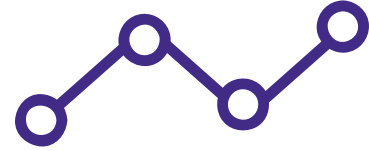
* TCAC Board during Housing CA Conference

* State of California: Betty T. Yee, State Controller

* Tia Boatman-Patterson, Director, California Housing Finance Agency

* Susan Lea Riggs, Acting Director, California Housing and Community Development (HCD)

LA COUNTY FORUMS



LA County Supervisorial District 5:

Pasadena



Antelope Valley



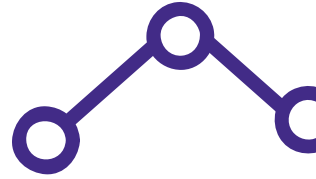
LA County Supervisorial District 4:

Long Beach

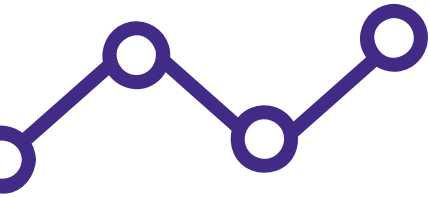


COMMENT LETTERS

Housing Policy or Regulation



- **City of Los Angeles Linkage Fee**
- **UMR Regulation March 2016**
- **UMR Regulation November 2016**
- **TCAC October 2016**
- **Supplemental Multi-Year Funding Plan for Affordable Housing Programs Budget Unit**
- **Santa Monica Land Use Voter Empowerment Initiative**



RUN LA SUCCESSIONS



RESIDENTS UNITED NETWORK

MEMBERS

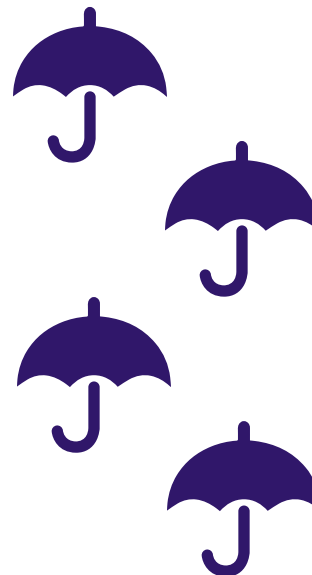
- 80 additional members recruited to RUN's 200+ network

MEETINGS

- Two regional trainings with 90+ residents and partner staff
- 20 visits with lawmakers at the RUN/Housing California lobby day

CAMPAIGNS

- 100 letters to support the passage of SB 1380
- "Shelter from the Rain" twitter storm: 300+ tweets in favor of SB 1380 (signed by Gov. Brown)



Thank You.

We look forward to working with you in 2017

