

**City of Los Angeles
Emergency Management Department**



**READY YOUR LA
NEIGHBORHOOD**

A guide for multi-unit housing communities

Emergency Management Department



WHAT WE DO

- Promote preparedness for all City departments, residents, and businesses.
- Lead citywide efforts in emergency and disaster mitigation, readiness, response and recovery.



READY YOUR LA NEIGHBORHOOD



Prepare

Preparing yourself, family, and your neighborhood reduces the serious impacts of disaster. Prepare for emergencies that can occur at home, work, or in transit. Many activities are free of cost and take only minutes.



Organize

Host a Map Your Neighborhood (MYN) meeting*. You and your neighbors will create a response plan. You will learn what to do in the first hour of a disaster, when the most lives and property can be saved.

**Virtual or in-person options available.*



Practice

Disasters can overwhelm the capacity of 9-1-1. Neighbors become your best source of help. Your confidence as responders will increase as you practice using your neighborhood response plan.



Connect

Sign up for the City's emergency notification program, **Notify LA**. When disasters occur, the City will alert you with specific instructions on what to do. **Text READY to 888-777** to sign up. You can also follow EMD on social media at @ReadyLA.



Communicate

Create and practice a personal communication plan that includes local, out of state, and other important emergency contacts.



Learn

Enroll in FREE preparedness training classes offered by our partner agencies, such as First Aid, CPR, Amateur Radio, Active Shooter Survival, Stop the Bleed, Community Emergency Response Team training, etc. to enhance your readiness skills.



READY YOUR LA NEIGHBORHOOD

Serving the multi-family communities of Los Angeles

If you would like more information about the Ready Your LA Neighborhood program, please contact:

ReadyLA.org

phone: (213) 484-4800



Meeting Date: _____

Ready Your LA Neighborhood

9 Steps – Immediately Following Disaster

Gathering Site and Care Center

Skills and Equipment Inventory

Response Teams

Your Building's Layout and Contact List

OVERVIEW

- Traditional Map Your Neighborhood is not ideal for Multi-family residences
- Convened a task force of Multi-family residence experts to review the program and offer suggestions
- Redesigned the program and incorporated feedback

9 Steps – Immediately Following Disaster

At home...

Step 1. Ensure your personal safety. A bicycle helmet or hard hat protects from falling debris. Sturdy shoes protect from broken glass. Leather gloves protect from sharp objects.

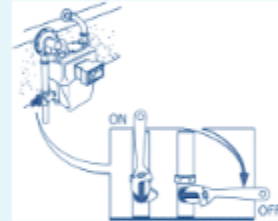
Step 1: Keep these items under the bed or tie them to the underside of the bed.



Step 2. Take care of your loved ones. Check for injuries and make sure they are dressed for safety as well.

Step 3. Follow your property's management's safety procedures for utility shut offs. This is the best way to prevent fire and contamination of your water supply. Remember to only shut-off utilities if necessary.

Step 3: DO NOT turn off your natural gas unless you smell natural gas, hear the sound of natural gas escaping or see other signs of a leak and ONLY if it is safe to do so.



Step 4. Fill your tub/sink with water to use for sanitation purposes. NOTE: This water may be unsafe for personal consumption. Shut off water at the building main if you see a leak.

Turn the valve 1/4 turn to shut off the gas. NEVER turn it back on once it has been turned off.

Step 5. Place the Help or OK sign (see back page) someplace highly visible to your neighbors and first responders. Posting the sign helps your neighbors locate those who need help first.

Step 6. Put your fire extinguisher where neighbors can see it. This way, if a neighbor has a small fire after a disaster, extinguishers are readily available. Some properties have fire extinguishers in common areas such as hallways



With neighbors...

Step 7. After Steps 1-6 are completed, go to the Gathering Site. (The following page will help you choose this location.)

Write your Gathering Site location here:

Step 8. Form Teams at the Gathering Site (see tab Neighbor Response Teams for step-by-step actions):

- **Team 1:** Listen to Emergency Alert AM/FM radio stations and monitor official social media channels if they are available. Keep neighbors informed on what you learn.
- **Team 2:** Check on neighbors with disabilities, access, or functional needs.
- **Team 3:** Follow property management protocols for utilities shut-off. Report to property management if you smell or hear gas or see the dials on the meter spinning faster than normal.
- **Team 4:** Check on all neighbors with the "Help" card displayed on the front door or window, or with no card showing. Be prepared to give first aid. Trust your instincts. If something feels unsafe, stay out.



Step 9. After your Team has completed its work, go back to the Gathering Site. Share what you have done with the rest of your neighbors. Decide if there is a need for a Care Center. If so, the Care and Shelter Team should begin setting it up.

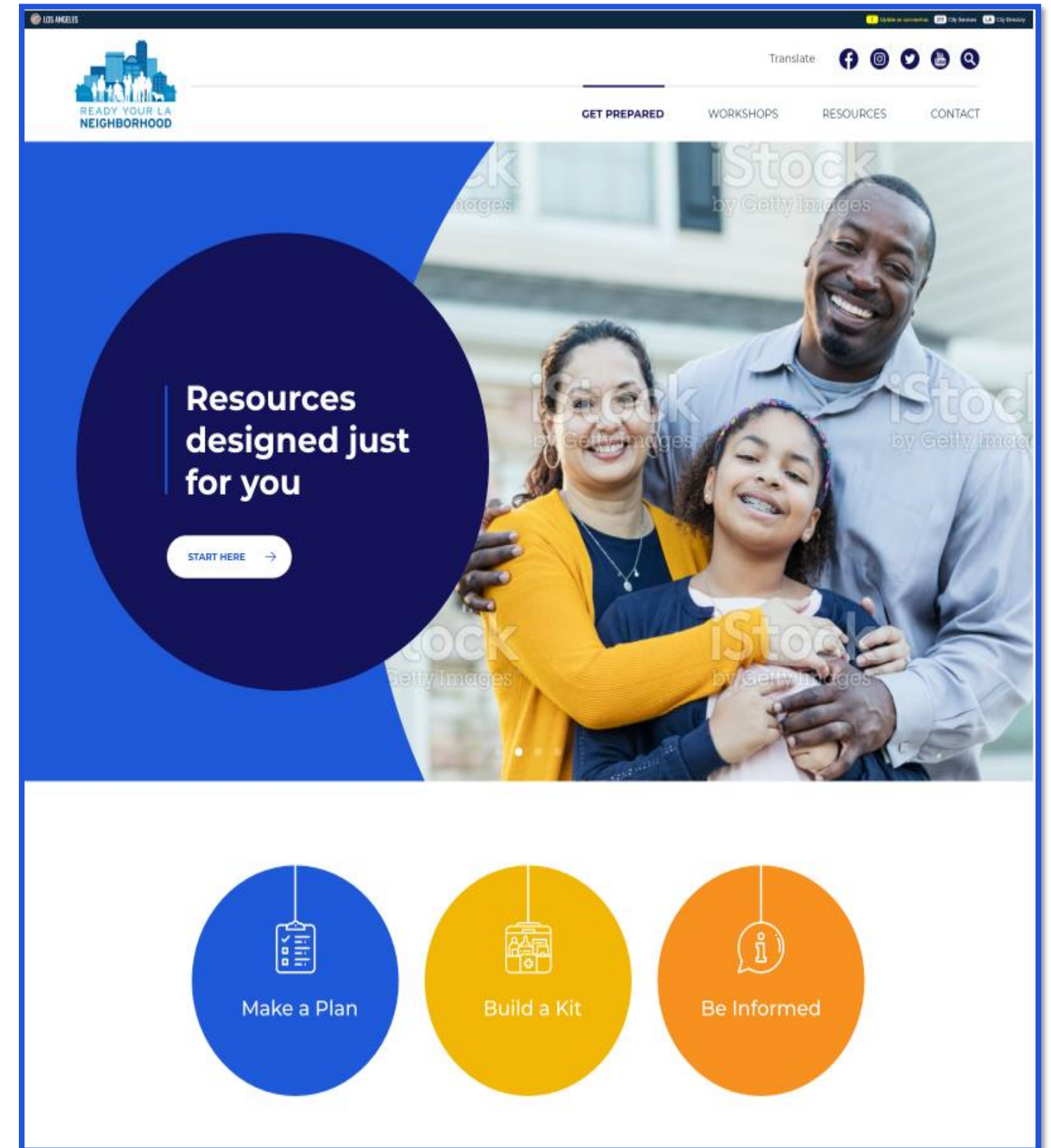
RYLAN Workshop Components

During the Ready Your LA Neighborhood Workshop, Residents Will:

- ✓ Learn a 9 Step Disaster Response Plan
- ✓ Choose a Neighborhood Gathering Site and Care Center
- ✓ Develop a Skills and Equipment Inventory List of What They Possess Collectively
- ✓ Develop a Contact List Where People Who May Need Extra Help Can Self-Identify

Ready Your LA Neighborhood – Now Online

- ✓ A “one-stop-shop” for all emergency preparedness information and RYLAN materials
- ✓ Provides the ability to facilitate the workshop independently or request assistance from EMD staff.
- ✓ Connect to the City of LA’s mass notification system for emergency alerts
- ✓ Resources for business preparedness
- ✓ Communicate directly with EMD regarding your property’s needs.
- ✓ Access partner trainings and preparedness materials.
- ✓ Real-time social media feed of authoritative sources for emergency alerts and information.



THANK YOU!

ANY QUESTIONS?

Jon Brown

Jon.brown@lacity.org

Jillian de Vela

Jillian.de.vela@lacity.org

